

BUDHA DAL PUBLIC SCHOOL PATIALA

Final Examination (28 February 2024)

CLASS - VII

PAPER- SCIENCE (SET-A)

M.M. 80

Time:3 hr.

**General Instructions:**

1. All questions are compulsory.
2. Attempt all questions section wise in the serial order neatly and leave one line after every answer.
3. Draw neat and labelled diagrams wherever required.

**Q1. Multiple Choice Questions : (Choose the correct option)**

(7×1=7)

1. 'X' chemical is used by a silkworm to solidify the liquid silk to form silk fibre. Identify X.  
a) spun      b) sericin      c) soap      d) dye
2. Rahul has to make a solution of acid in water to perform an experiment. Which one of the following is the correct way of making a solution of acid in water?  
a) add water to acid  
b) add acid to water  
c) mix acid and water simultaneously  
d) add acid to warm water
3. Which one of the following plants is grown by vegetative propagation of leaves?  
a) tomato      b) sugarcane      c) begonia      d) mango
4. Electric bulb's filament is made of \_\_\_\_\_ wire.  
a) Copper      b) nichrome      c) tungsten      d) magnesium
5. Which type of mirror is used as a side view mirror in vehicles?  
a) concave mirror      b) convex mirror      c) plane mirror      d) biconvex mirror
6. Name the gas produced in the digester tank.  
a) chlorine gas      b) methane gas      c) biogas      d) hydrogen sulphide gas
7. During a physical change \_\_\_\_\_ substance is formed.  
a) a new      b) no new      c) a big      d) a small

**Q2. Assertion/ Reason:**

(1)

In the following question, two statements are given - one labelled Assertion (A) and other labelled Reason (R). Select correct answer to this question from codes (a), (b), (c) and (d) as given below :

**Assertion (A):** Silk gives a smell of burning hair, when burnt.

**Reason (R) :** Silk is obtained from plants.

- a) Both A and R are true and R is correct explanation of assertion.
- b) Both A and R are true but R is not correct explanation of assertion.
- c) A is true but R is false.
- d) A is false but R is true.

A - 1



**Q3. Answer in one word :**

1. Name an Indian breed of sheep that gives good quality wool.
2. Name the strongest natural fibre.
3. Which acid is present in an ant's sting?
4. Name the winds blowing towards 60°N and 60°S latitudes?
5. Which acid is present in curd?
6. Name the excretory organ of Amoeba?
7. In which direction does current flow in a closed circuit?
8. Which colour appears on the upper arc of the rainbow?
9. Name one infectious disease caused by stagnant sewage.
10. Name the male reproductive organ of the plant.

(7×2=14)

**Q4. Short Answer Questions:**

1. What is selective breeding?
2. List two situations that generate wind currents on earth.
3. What is blood? What are its two components?
4. A coil suspended freely, points in any direction when no current is passed through it. What happens when current is passed through it?
5. List two differences between convex and concave lens.
6. What is eutrophication? What its cause?
7. Why is explosion of crackers considered as a chemical change?

(12×3=36)

**Q5. Long Answer Questions :**

1. Write the steps involved in the production of silk from moth stage to its fabric stage.
2. List three differences between acids and bases.
3. Why should factory waste be neutralised before discharging it into water bodies? Explain.
4. a) What are summer monsoons?  
b) How are they useful?
5. Name the waste product excreted by (a) large intestine (b) lungs
6. Differentiate between arteries and veins. Give three differences.
7. Distinguish between sexual and asexual reproduction in plants.
8. What is overloading? Why is a fuse wire necessary in a circuit? How does it work?
9. Rohan takes two light sources, a torch with a white light and a torch with a laser beam. Both torches are lighted.  
a) In which of the two sources is a band of seven colours observed?  
b) What is dispersion of light?  
c) Explain the natural phenomenon caused by dispersion of light.



10. What is a septic tank? How is it used?

11. a) Define rusting.

b) Why does rusting occur?

c) List two ways to prevent rusting.

12. a) What is pollination?

b) Why is dispersal of seeds essential for plants?

Q6. Classify the following as physical or chemical changes. ( $\frac{1}{2} \times 4 = 2$ )

i) Melting of ice

ii) Rusting of iron

iii) Cooking of food

iv) Burning of wood (5)

Q7. **Activity Based Question:**

Ravi hangs two inflated balloons of equal size about 10cm apart on a stick with the help of threads tied to their mouths. Then he blows air hard in the gap between the two balloons, with his mouth.

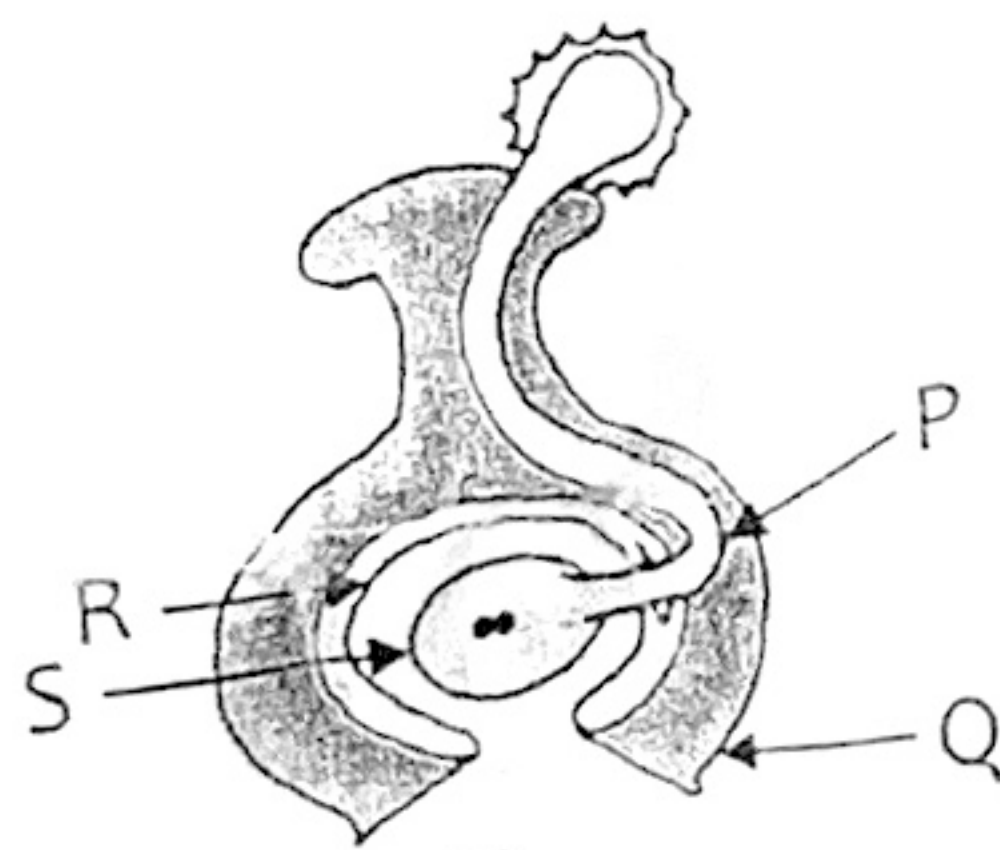
Answer the following questions based on the above activity:

a) What happens when air is blown in the gap between the balloons?

b) What conclusion does he draw from this?

c) Name two natural phenomenon caused by high speed winds. (5)

Q8. **Figure Based Question:**



a) Identify the labellings P, Q, R and S.

b) Define the process shown in figure.

c) What happens to the following after fertilisation?

(i) Ovary      (ii) Ovule